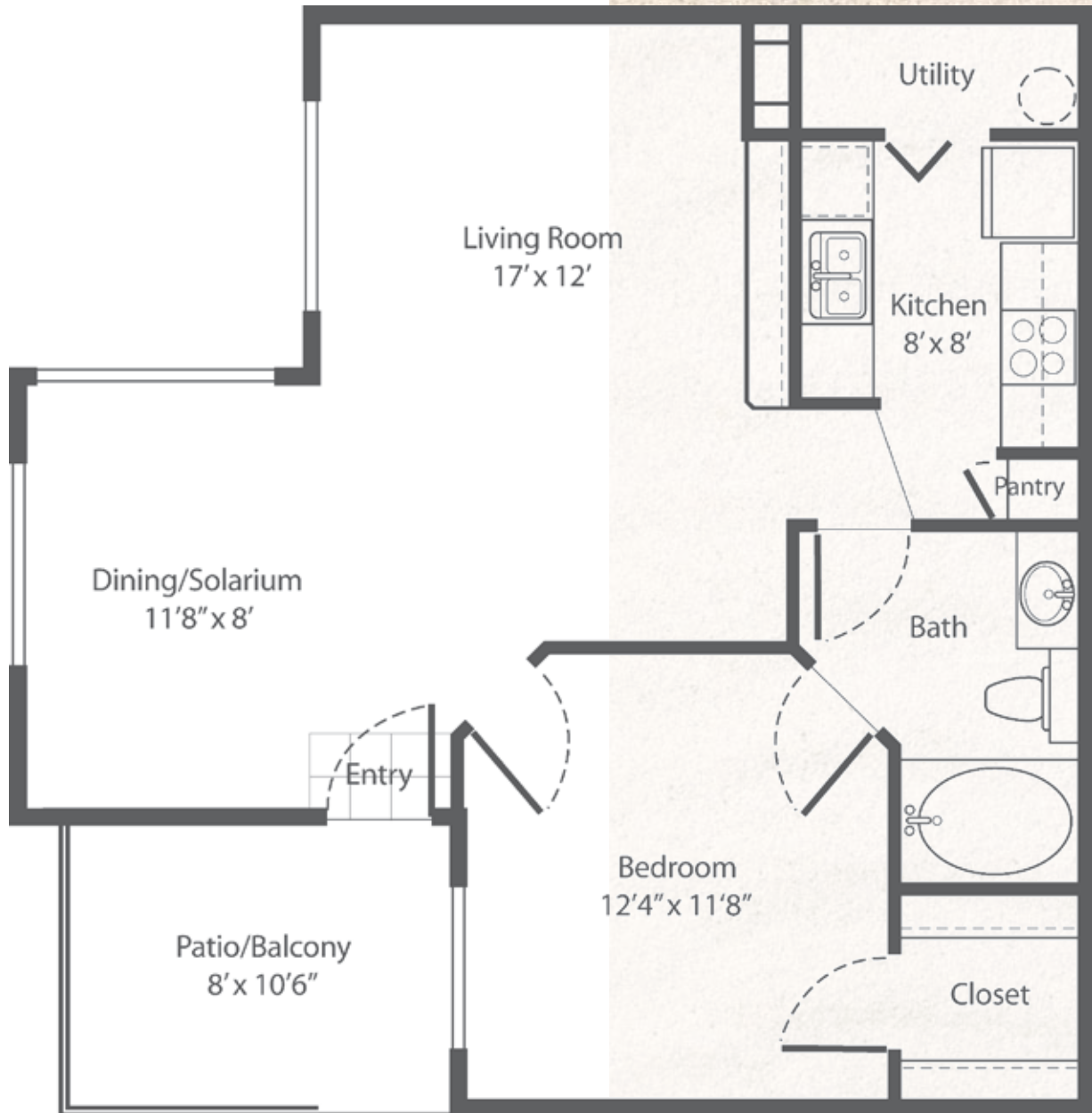


Coronado One Bedroom / One Bath

Interior Square Feet	725
Patio/Balcony Square Feet	85
Total Estimated Square Feet	810



There are various methods for calculating the square footage of a unit, and depending on the method of calculation, the quoted square footage of the unit may vary.

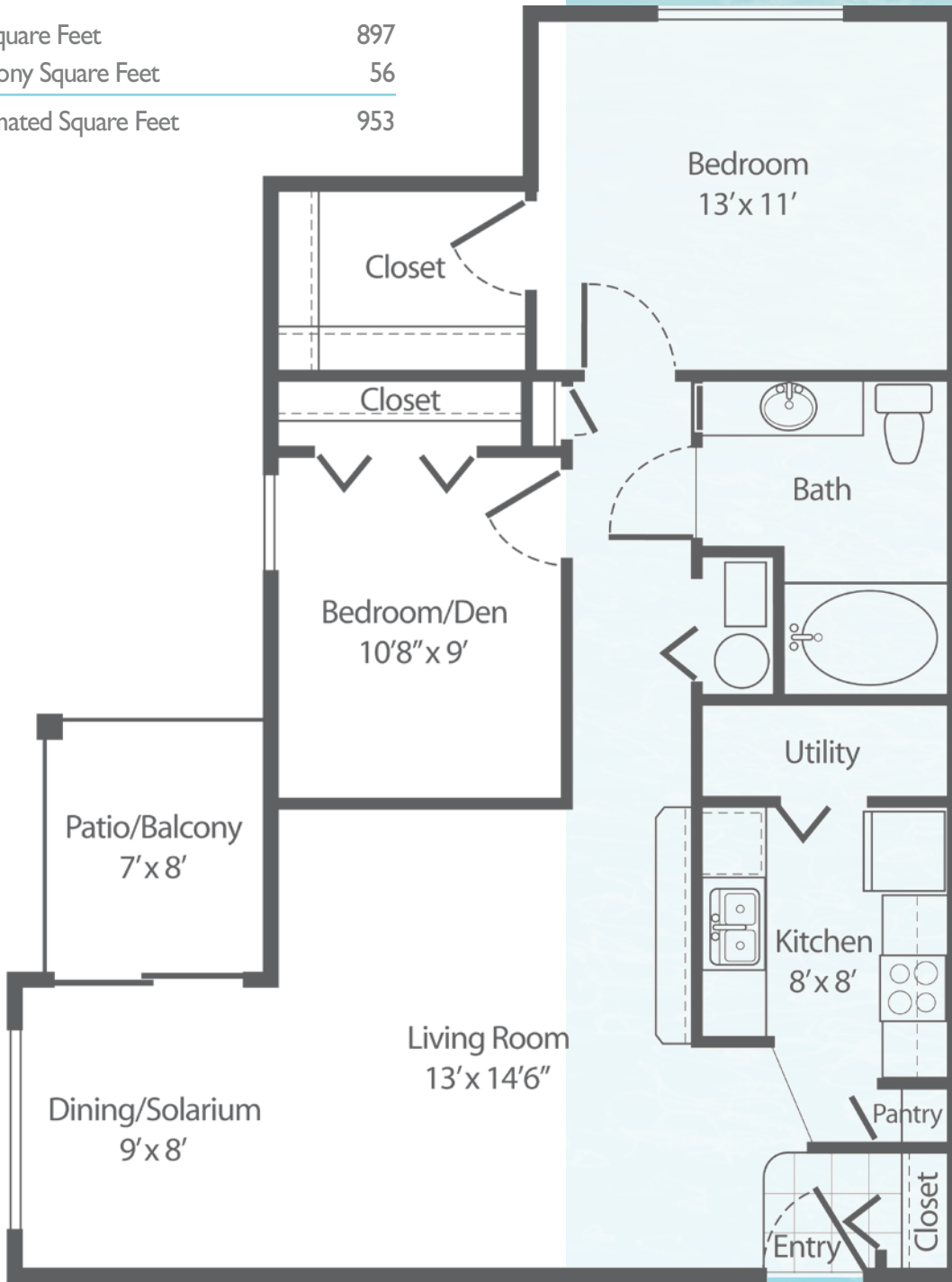
Oral representations cannot be relied upon as correctly stating representations of the Developer; For correct representations, make reference to the documents required by Florida statutes section 718.503 to be furnished by the Developer to buyer or lessee.



www.beachwaycondos.com • 727.397.4524

Malibu Two Bedroom / One Bath

Interior Square Feet	897
Patio/Balcony Square Feet	56
Total Estimated Square Feet	953



There are various methods for calculating the square footage of a unit, and depending on the method of calculation, the quoted square footage of the unit may vary.

Oral representations cannot be relied upon as correctly stating representations of the Developer. For correct representations, make reference to the documents required by Florida statutes section 718.503 to be furnished by the Developer to buyer or lessee.



BeachWay

CONDOMINIUMS

www.beachwaycondos.com • 727.397.4524

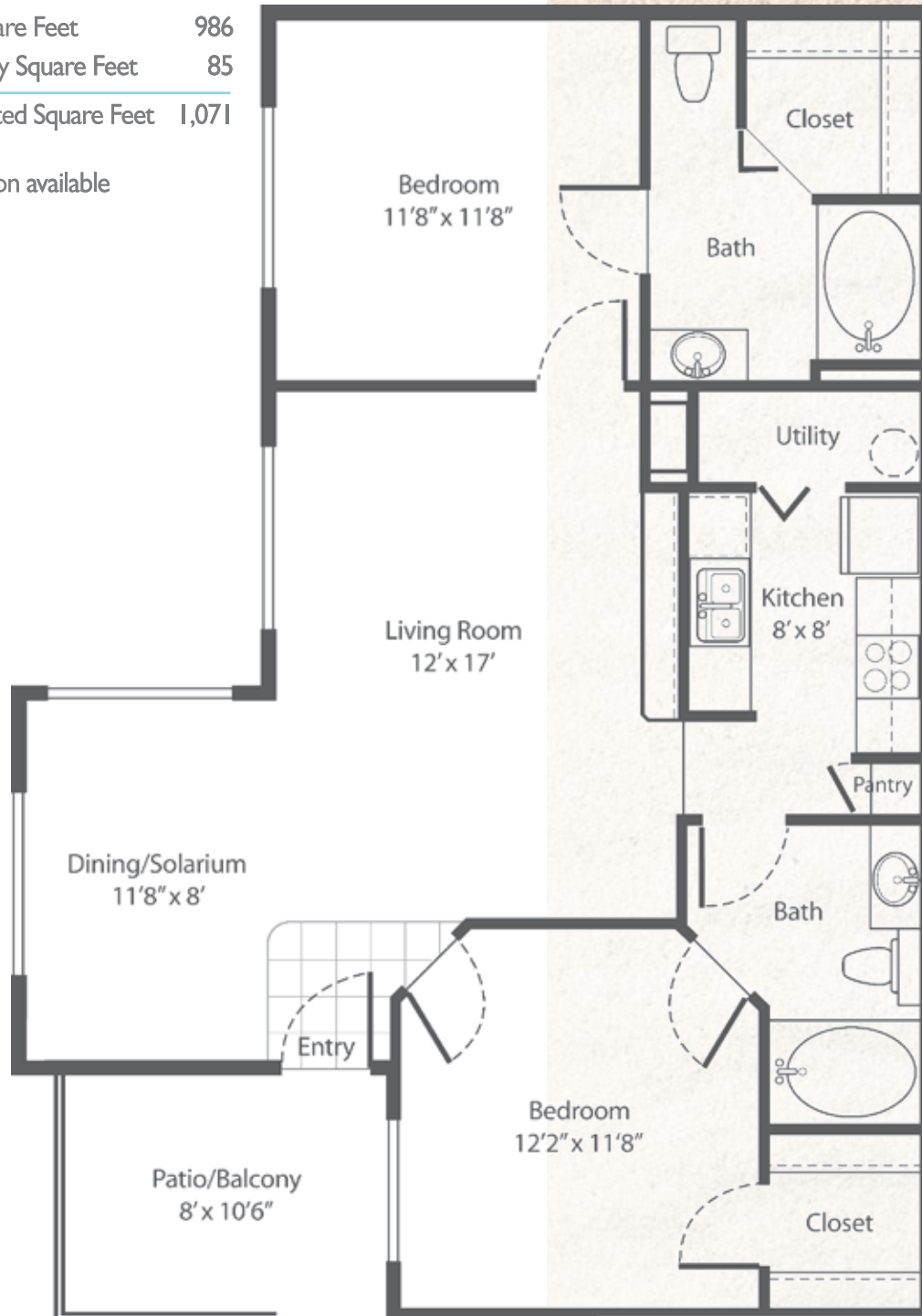
St. Tropez Two Bedroom / Two Bath

Interior Square Feet 986

Patio/Balcony Square Feet 85

Total Estimated Square Feet 1,071

Garage option available



There are various methods for calculating the square footage of a unit, and depending on the method of calculation, the quoted square footage of the unit may vary.

Oral representations cannot be relied upon as correctly stating representations of the Developer; For correct representations, make reference to the documents required by Florida statutes section 718.503 to be furnished by the Developer to buyer or lessee.



BeachWay
CONDOMINIUMS

www.beachwaycondos.com • 727.397.4524